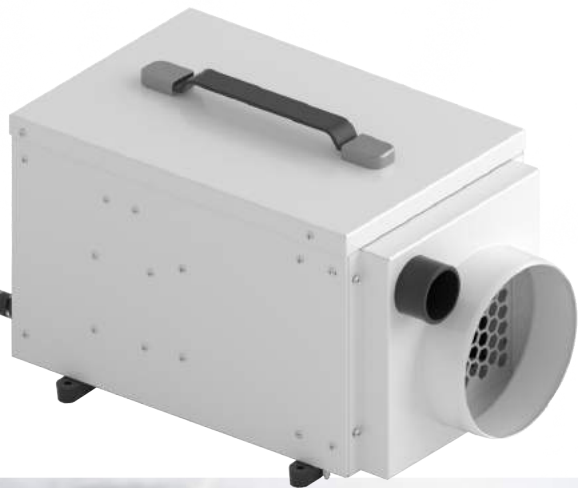


ionmax⁺

DF12

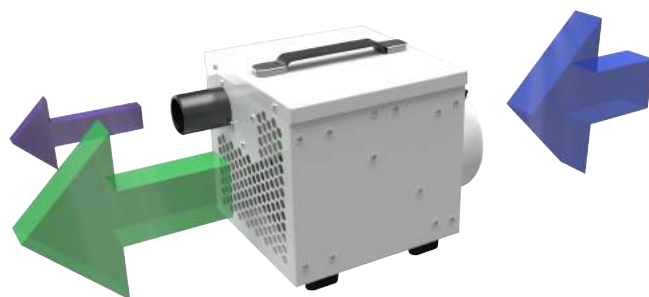
INDUSTRIAL DESICCANT DEHUMIDIFIER



The Ionmax+ DF12 Industrial Desiccant Dehumidifier is fully automatic, operating 24/7 under normal and harsh conditions. It has been tested and improved to dry areas with temperatures as low as 20°C - four to seven times faster than traditional dehumidifiers. Probably the smallest 12 litre industrial-grade dehumidifier on the market, the DF12 works perfectly in any orientation - on walls and floors, and even upside down on the ceiling. It is perfect as a powerful dehumidifier for the home, and for industrial applications and settings as well.

HOW IT WORKS

The Ionmax+ DF12 desiccant dehumidifier uses DryFan® technology and a continuously rotating moisture absorbing patented wheel termed a "Rotor". A highly efficient yet low noise fan draws air into the unit (Process Air) and forces it through a section of the rotor. As the air passes through the rotor, the honeycomb of hygroscopic membranes absorbs almost all of the moisture creating an extremely dry airstream.



FEATURES



Ideal for Indoor and Industrial Use

With an extraction rate of 12 litres/day, the DF12 is designed to be used almost anywhere, including living spaces, lofts, basements, and crawl spaces. Set it up in any orientation, even upside down.



Duct Air-In Option

The DF12 is fitted with a metal duct flange on the filter grill to allow for an external 125mm duct to draw in the air from a more remote point.



Whisper Quiet Fan

Its quiet fan makes this model ideal for small spaces such as bedrooms and workspaces.



Safe to Use

The patented technology is energy efficient and can never overheat to hazardous temperatures, even if vents become accidentally blocked.



On Four Feet

Anti scratch plastic feet can cleverly be swivelled out to make four anchor points so that the DF12 can be fastened with suitable screws or bolts (not provided) to walls or simply fastened down onto a surface.



Remote Humidistat Option

A low voltage humidistat (optional) can be added to the DF12 by way of a simple plug, so you can control the DF12 remotely.



Washable Air Filter

An inlet air filter cleans the air entering the unit and helps maintain the performance of the dehumidifier.



Auto Reset

Automatically restarts operation when the power supply returns after an interruption.

UNIT POSITIONING

The DF12 is designed to be used almost anywhere, including living spaces, lofts, basements and crawl spaces. Set it up in any orientation - it'll even work upside down!



Laundry Room

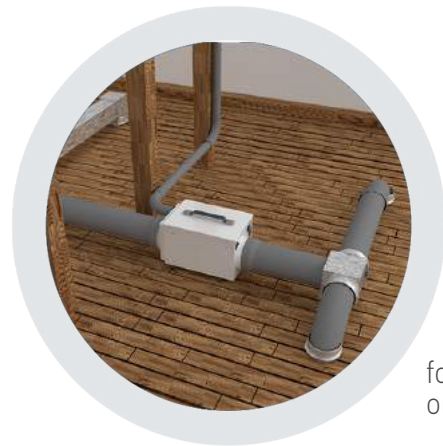
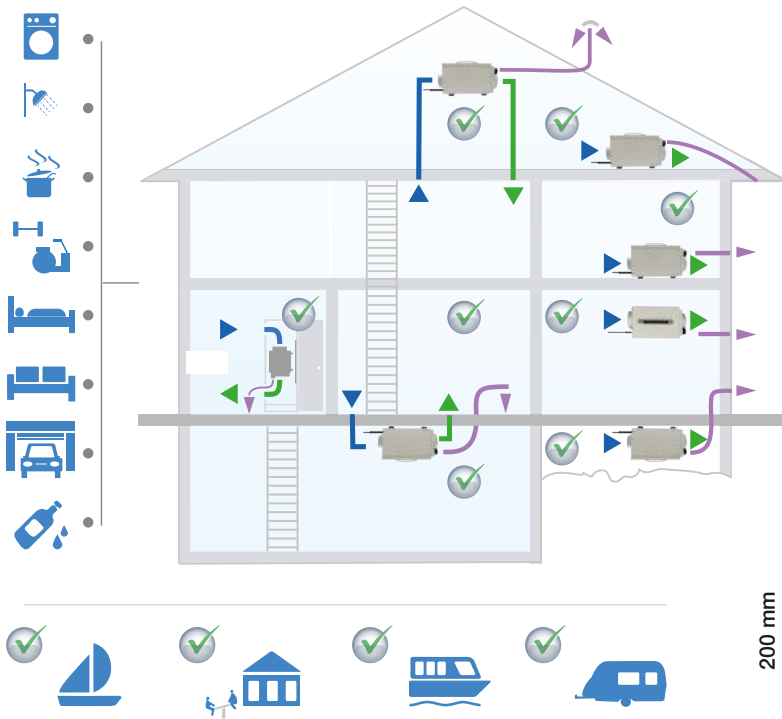


Upside Down

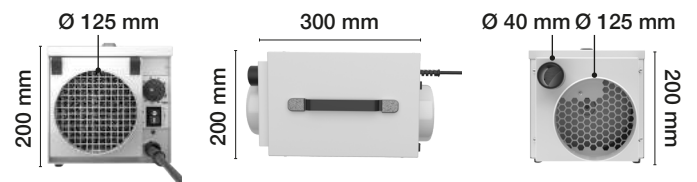


In a Closet

EXTERNAL POSITIONING



for more than one room



SPECIFICATION

Voltage	230V ~ 1 phase • 50 Hz
Power Consumption	0.50 kW
Tank Capacity	N/A
Moisture Removal	10 L/day (at 27°C 60%RH) ~ 12 L/day (at 35°C 90%RH)

Net Weight	5.4 kg
Dimension (W x D x H)	200 x 300 x 200 mm
Noise Level	44 dB
Warranty	1 Year