

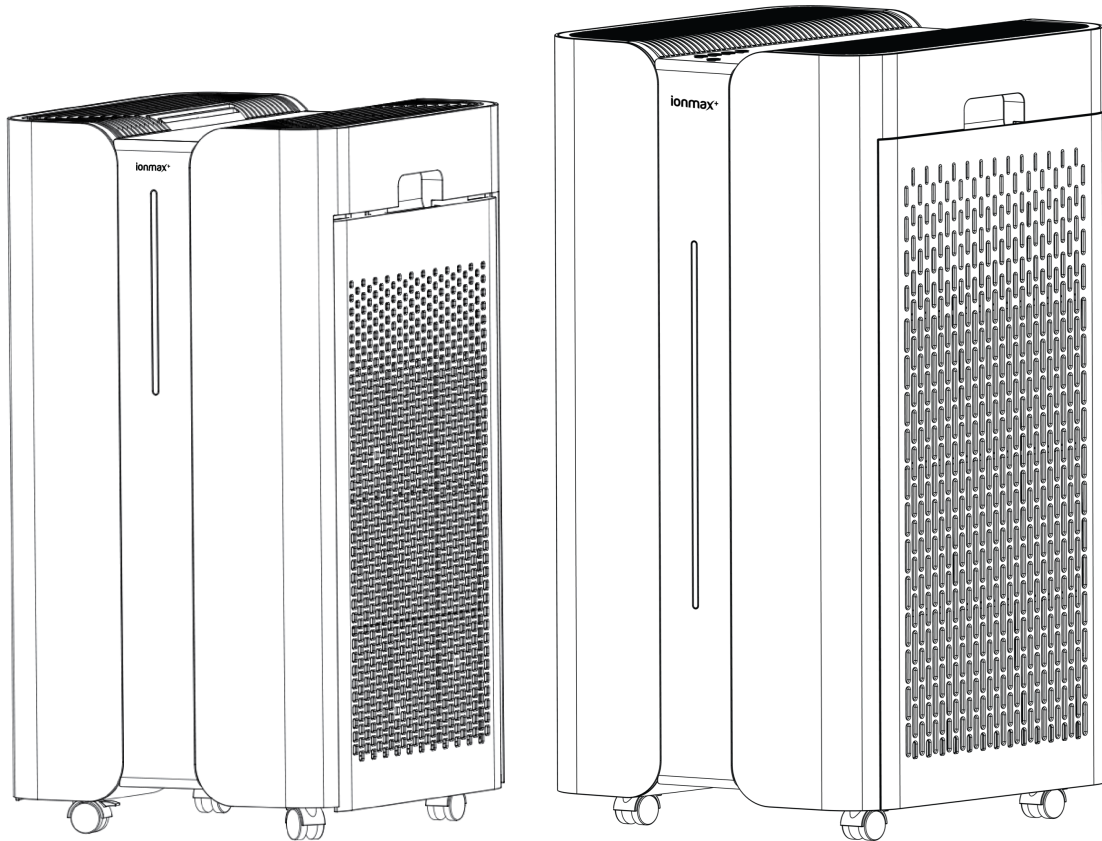
ionmax⁺

ION900PRO

ION1000PRO

AIRE & AIRE X

High-Performance HEPA UV Air Purifier



User Manual

Version 1.0. Updated July 2022.

Dear Customer

Thank you for purchasing the Ionmax+ Aire air purifier. The Ionmax+ Aire air purifier can help to improve the indoor air quality in your home or office. Paired with the Ionmax WiFi app, you can easily control and monitor your air purifier and indoor air quality from your mobile phone.

Please read this manual carefully before use to ensure proper usage and save these instructions for future reference.

The package includes

- Ionmax+ Aire air purifier
- User manual

⚠ Note: Remove plastic bags from filters before first use

Table of Contents

Safety Instructions	4
Product Diagram	5
Specifications	6
Purification System	7
Unit Setup	8
Operating Instructions	9
Power Button	9
IONX-Shield Button	10
Child Lock Button	10
UVX-Shield Button	10
Sleep Button	10
Timer Button	10
Filter Reset	11
Fan Speed Button	11
WiFi Button	11
Mobile App Setup	12
Cleaning and Maintenance	14
Storage Instructions	15
Filter Replacement	15
Troubleshooting Guide	17
Warranty Details	18
Warranty Registration	19

Safety Instructions

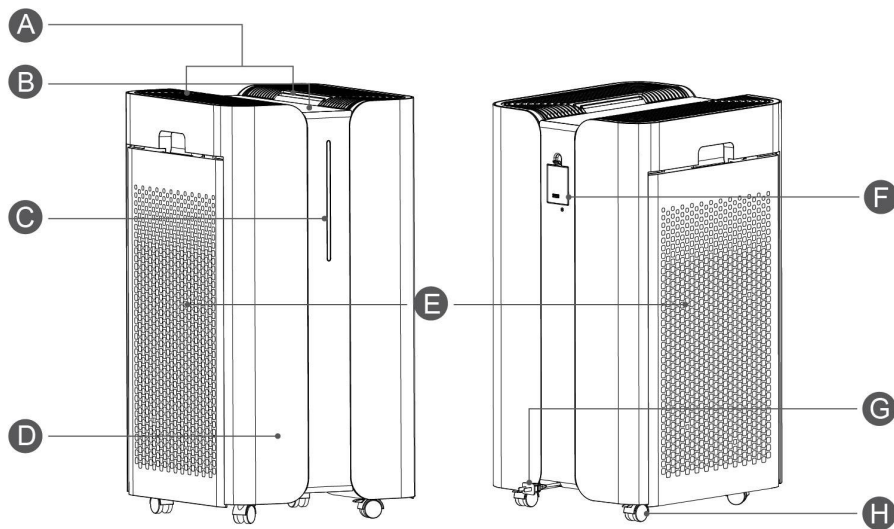


PLEASE READ ALL THE TIPS AND WARNINGS BELOW BEFORE USING THE AIR PURIFIER.

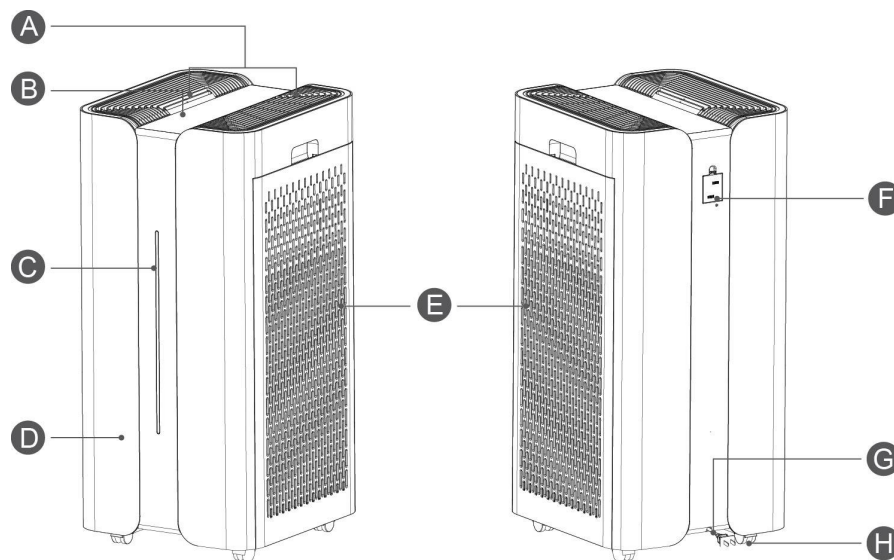
- Use the unit only as directed in the User Manual.
- Do not allow children or persons with reduced physical, sensory, or mental capabilities to operate the unit without adult supervision.
- Only designed for use in a 240V, 50Hz outlet.
- Use indoors only.
- Only operate the unit when it is fully assembled.
- Never touch the unit with wet hands or allow it to come into contact with water.
- Switch off all controls before unplugging the power supply.
- Always disconnect the unit from the power supply before moving or cleaning the unit and when the unit is not in use.
- When removing the power plug, always hold the plug and never pull the cord.
- This air purifier is not a substitute for proper ventilation, regular vacuum cleaning or an extractor hood or fan while cooking.
- Reserve sufficient space around the unit for proper airflow, as recommended under [Unit Setup](#).
- Do not use the unit in bathrooms, kitchens, humid areas, near fireplaces, or in proximity to flammable or combustible products, as electric shock and a fire hazard may result.
- Do not use water or other liquids, including flammable products, to clean the unit.
- Never operate the unit if the plug or cord appears damaged.
- Contact the authorised distributor or qualified personnel immediately for examination and repair.
- Do not insert fingers or foreign objects into the air inlet and outlet or block them by placing items on the air outlet or in front of the air intake.
- Do not place anything on top of the unit and do not sit on the unit. Do not place the unit directly below an air conditioner, as condensation may drip into the unit.
- Do not operate this unit when using indoor insect repellents (aerosols) or in places with oily residues, burning incense or chemical fumes.
- Do not use the unit in a room with significant temperature changes, as this may cause condensation inside the unit.

Product Diagram

Ionmax+ Aire



Ionmax+ Aire X

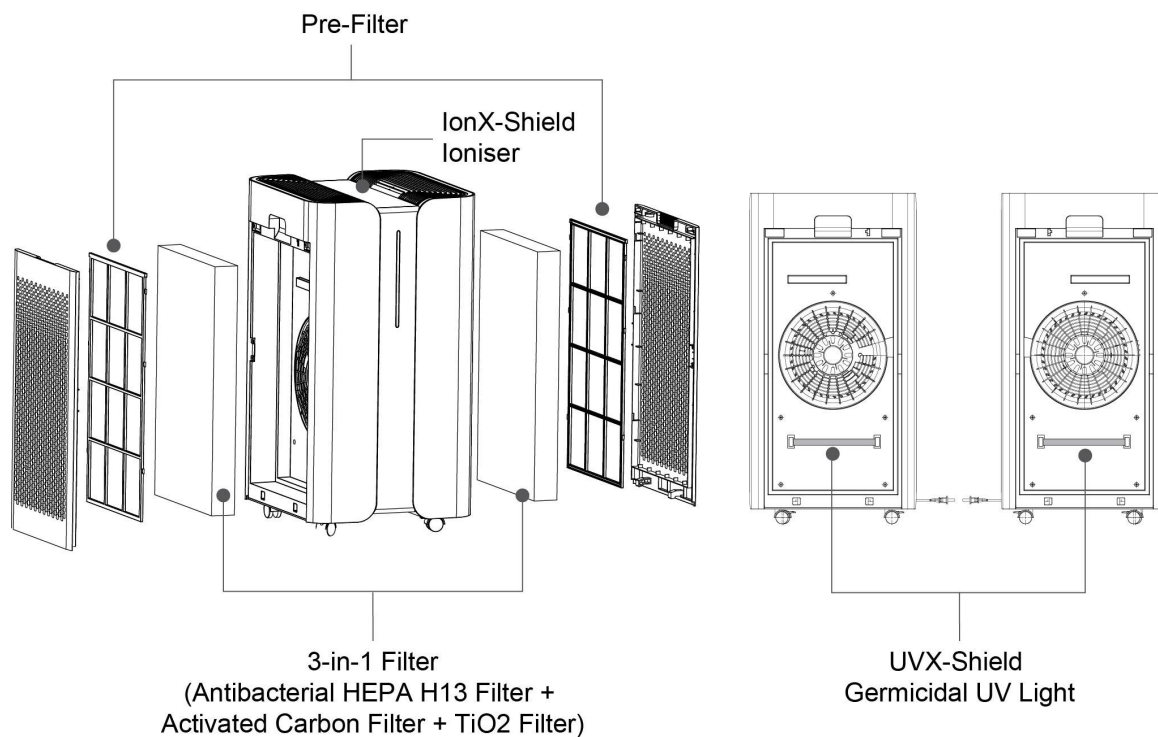


- | | |
|-------------------------|----------------------|
| Ⓐ Air Outlet | Ⓔ Air Inlet |
| Ⓑ Control Panel | ⓕ Air Quality Sensor |
| Ⓒ Air Quality Indicator | Ⓖ Power Cord |
| Ⓓ Body | ⓓ Universal Wheels |

Specifications

	Ionmax+ Aire	Ionmax+ Aire X
SKU	ION900PRO	ION1000PRO
Room Size	77 m ² (1) - 234 m ² (2) <small>1) ANSI/AHAM AC-1 2015 2) NRCC-54013-2011</small>	85 m ² (1) - 260 m ² (2) <small>1) ANSI/AHAM AC-1 2015 2) NRCC-54013-2011</small>
CADR (m³/h)	900 m ³ /h	1000 m ³ /h
Air Flow	Top	Top
HEPA Filter	H13	H13
Ion-X Shield Ioniser	Yes	Yes
UVX-Shield Germicidal UV Light	Yes	Yes
Fan Speeds	4	4
SmartSens Air Quality Monitor	Yes	Yes
Air Filter Replacement Alert	Yes	Yes
Air Filter Replacement	6 - 12 months	6 - 12 months
Timer	Up to 12 hours	Up to 12 hours
WiFi App Control	Yes	Yes
Rated Voltage	240V, 50Hz	240V, 50Hz
Power Consumption	105 W	95 W
Noise Level	~66dB(A)	~66dB(A)
Warranty	2 years	2 years
Dimensions	370 x 396 x 691 mm	370 x 400 x 796 mm
Weight	14.2 kg	15 kg

Purification System



① Pre-Filter

Traps large airborne particles, such as hair, dust, and pet dander.

② Antibacterial HEPA H13 Filter

Captures 99.97% of microscopic allergens and germs as small as 0.3 microns from the air with a proven ability to kill bacteria and prevent mould growth.

③ Activated Carbon Filter

Neutralises odours caused by smoke and VOCs emitted from new furniture, household disinfectants, paint and more.

④ TiO2 Filter

Breaks down organic compounds such as VOCs through an oxidation process to remove odours from the air.

⑤ UVX-Shield Germicidal UV Light

Inactivates viruses and bacteria trapped within the air purifier through direct UV-C light exposure.

⑥ IONX-Shield

Releases negative ions into the surrounding air to help with the removal of airborne particles and freshens the air.

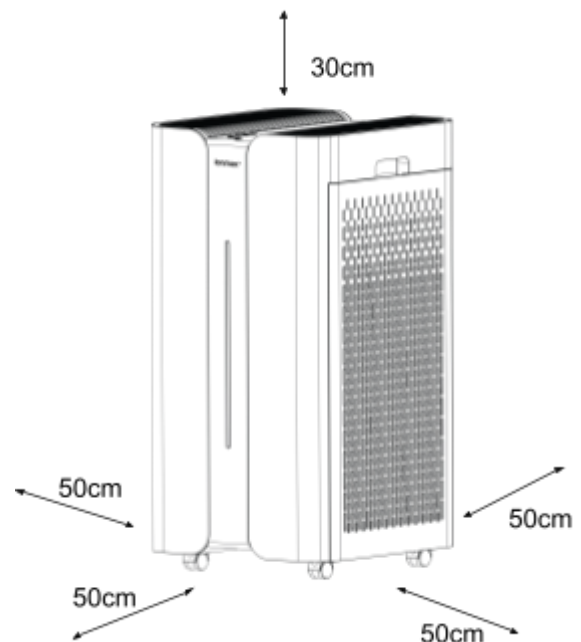
Unit Setup

1. Remove the unit from the box and plastic bag.
2. Place the unit on a firm, flat, and level surface.
3. Open the side panels and remove the plastic bags from the filters (refer to [Filter Replacement Instructions](#) for a detailed guide).
4. Replace the filters and side panels into position.
5. Plug the unit into a suitable electrical outlet to begin operation.

Unit Placement

For proper airflow, please follow these guidelines on where to place the unit:

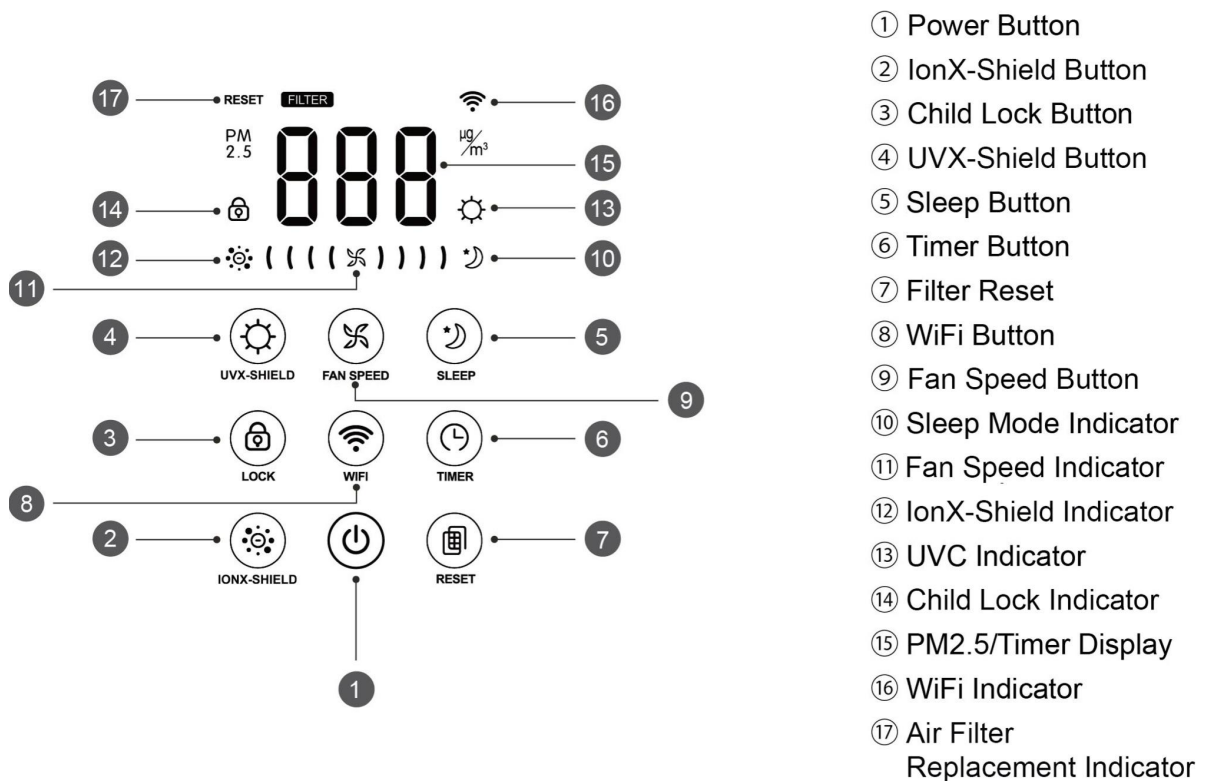
- Avoid placing the unit behind curtains, under windows, near furniture or shelves, or near any obstacle
- Ensure its air inlet and outlet are not blocked
- Position the unit at least 50cm away from any wall or furniture
- Reserve at least 30cm of space above the unit



Important Notes

- Move the unit using its universal wheels; avoid lifting the unit to avoid injury.
- When the unit is not in use, switch it off and unplug it from the electrical outlet.
- If the unit will not be in use for a long period of time, pack and store it according to the [Storage Instructions](#).

Operating Instructions



Power Button

Connect the unit to a suitable power supply, then touch the Power Button.

The unit will switch on with a notification sound and begin operation in Auto mode. The Air Quality Indicator will flash for about 30 seconds while the Air Quality Sensor starts up.

The unit will then indicate the detected indoor air quality level through the PM2.5 level on the digital display and the Air Quality Indicator's colour.

Digital Display	Air Quality Indicator Colour	Indoor Air Quality Level
0-35	Blue	Excellent
36-75	Green	Good
76-150	Yellow	Average
150+	Red	Poor



IONX-Shield Button

Touch the IONX-Shield Button to enable the Ioniser function. The IONX-Shield Indicator will light up, and the built-in negative ion generator will start to release negative ions to freshen the air.

Touch the IONX-Shield Button again to disable the Ioniser function. The IONX-Shield Indicator light will switch off.



Child Lock Button

While the unit is in operation, hold the Child Lock Button for approximately 3 seconds to enable Child Lock. The Child Lock Indicator will light up and all control panel buttons will be locked to prevent unintended operation, especially by children.

To disable Child Lock, hold the Child Lock Button for approximately 3 seconds. The Child Lock Indicator light will switch off, and the control panel buttons will be unlocked.



UVX-Shield Button

Touch the UVX-Shield Button to enable the UV disinfection function. The UVX-Shield Indicator will light up, and the built-in UV lamp inside the unit will switch on.

Touch the UVX-Shield Button again to disable the UV disinfection function. The UVX-Shield Indicator light will switch off.



Sleep Button

Touch the Sleep Button to enable Sleep Mode. The unit will change to Low fan speed and switch off all control panel and indicator lights, except for the Sleep Mode Indicator and the Power Button indicator.

Touch the Sleep Button again to disable Sleep Mode. The Sleep Mode Indicator light will switch off, and the unit will return to its normal mode of operation.



Timer Button

While the unit is in operation, touch the Timer Button repeatedly until the digital display shows the preferred purifying time between 1 to 12 hours (01H ~ 12H). The unit will switch off after the allotted time has passed.

When the timer is enabled, the digital display will cycle the hours remaining with the current air quality level. If the timer is enabled during Sleep Mode (digital display is off), touch the Timer Button once to check the time remaining on the digital display for 5 seconds.

To switch off the Timer, touch or hold the Timer Button until the digital display shows 0 hours (00H). If no timer is set, the unit will operate continuously.

Filter Reset

When the Filter Replacement Indicator (below) starts blinking, the unit's filters require replacement. Replace the filters following the [Filter Replacement Instructions](#).

After replacing the filters, hold the Filter Reset Button for 3 seconds until the Filter Replacement Indicator bar stops blinking, which indicates that the Filter Reset is successful.



Fan Speed Button

The unit operates at four fan speeds:



The fan speeds may change based on the Mode selected.

Auto Mode: When the unit is switched on, it will start operating in Auto Mode by default. In Auto Mode, the Fan Speed Indicator will flash cyclically, and the unit will automatically adjust its fan speed according to the indoor air quality detected by the air quality sensor.

Sleep Mode: When Sleep Mode is selected, the unit will operate at Low Fan speed. Refer to [Sleep Button](#) instructions.

Manual Mode: Select any fan speed manually by touching the Fan Speed Button until the desired fan speed is reached.

WiFi Button

Hold the WiFi Button for 5 seconds while the unit is in operation to connect to a new WiFi network or if a WiFi network reset is required.

The WiFi Indicator will start blinking to show it is ready for network connection and will stop blinking when the unit has successfully connected to a network.

Mobile App Setup

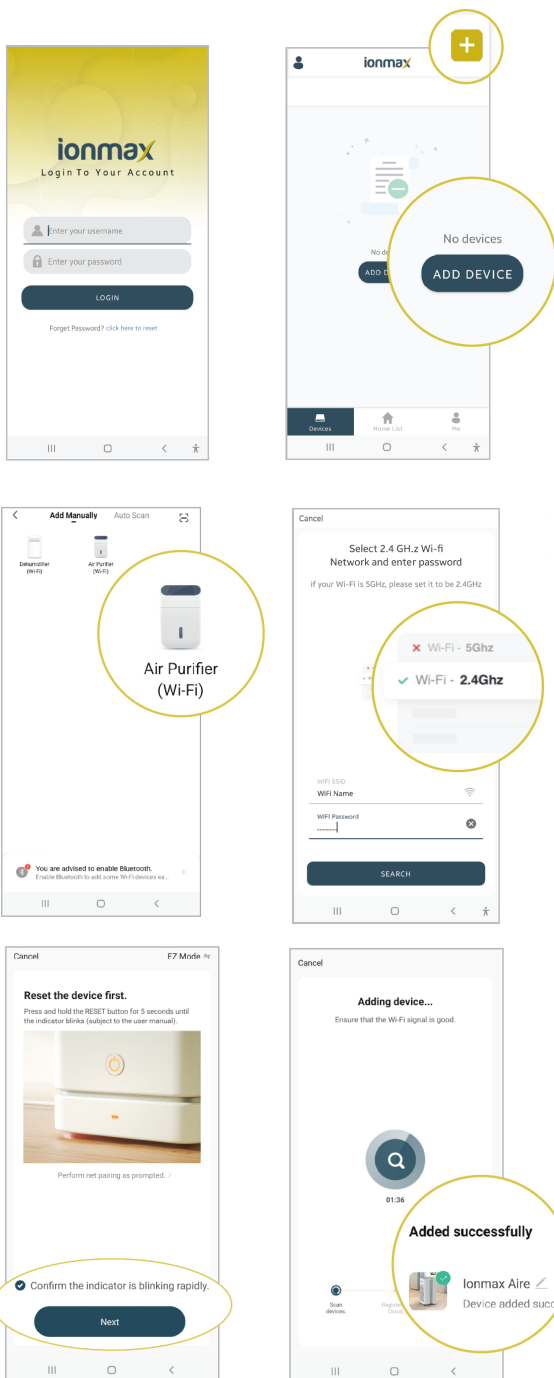


Download the Ionmax app on your phone.

Scan the QR code or visit bit.ly/ionmax-app

EZ Mode Connection

This is the default connection mode in the Ionmax app and the easiest way to connect.



① Log in to an existing account for the Ionmax app, or register a new account.

*If your account is new, you will be prompted to add a location first.

② Select “Devices”.

Select “+” or “Add Device”.

③ Under ‘Add Manually’, select “Air Purifier”.

④ Enter your WiFi network SSID and password on the app.

*Please use a 2.4GHz network only.

⑤ Ensure that the WiFi indicator on the air purifier is blinking rapidly (about 2 flashes per second). This indicates that the air purifier is in EZ Mode and is ready for connection.

*If the WiFi indicator is not blinking or is blinking slowly, hold the WiFi button on the air purifier for 5 seconds until the WiFi indicator is blinking rapidly.

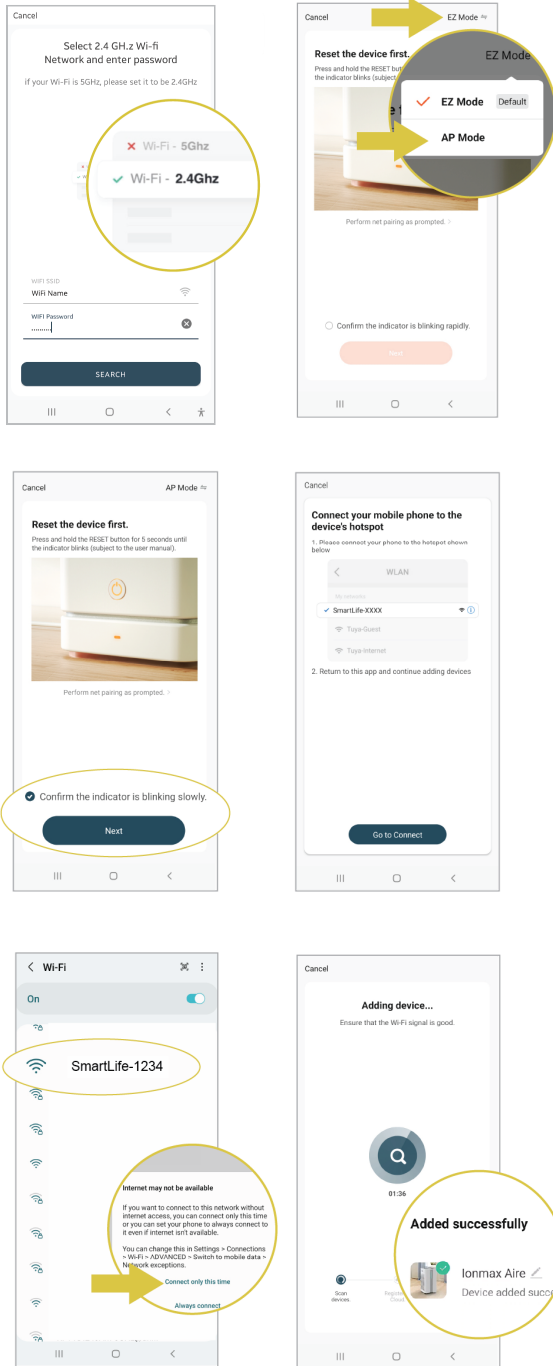
Then, tick the checkbox to confirm and select “Next” to continue.

⑥ The app will search for the air purifier and connect automatically.

AP Mode Connection

If EZ Mode Connection was unsuccessful, you will be prompted to switch to AP Mode Connection instead. Follow the on-screen app instructions to proceed.

Alternatively, refer to the steps below to connect to the air purifier using AP Mode manually.



- ① Follow the EZ Mode Connection guide until step ④ (connecting to a 2.4GHz WiFi network).

- ② Select "EZ Mode" to open the mode dropdown list and select "AP Mode".

- ③ Ensure that the WiFi indicator on the air purifier is blinking slowly (about 1 flash per second). This indicates that the air purifier is in AP Mode and is ready for connection.

*If the WiFi indicator is not blinking or is blinking rapidly, hold the WiFi button on the air purifier for 5 seconds until the WiFi indicator is blinking slowly.

Then, tick the checkbox to confirm and select "Next" to continue.

- ④ Select "Go to Connect" to continue.

You will be redirected to your phone's Wi-Fi networks settings to connect to the air purifier's hotspot directly.

- ⑤ From your phone's list of detected Wi-Fi networks, select the network named "SmartLife-XXXX".

If the "Internet may not be available" notification appears, select "Connect only this time" to continue.

- ⑥ Return to the Ionmax app.

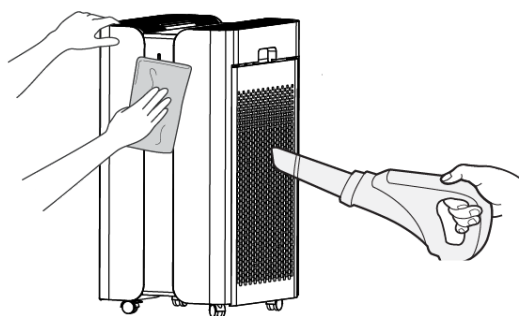
The app will search for the air purifier and connect automatically.

Cleaning and Maintenance

Proper use and regular maintenance can ensure efficient operation and extend the unit's life.

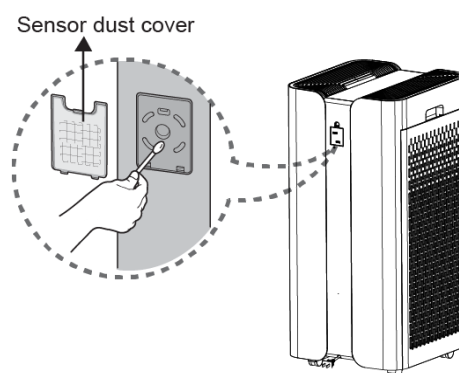
Always switch off the unit and unplug the power supply before cleaning the unit.

Clean the unit at least once a month.



Wipe down the outer case of the unit using a soft, damp cloth.

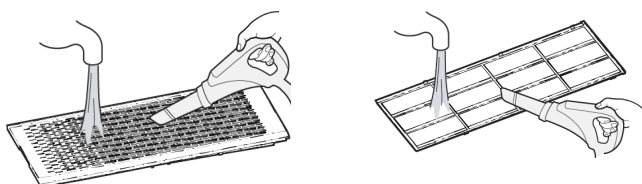
Use a vacuum cleaner to remove dirt from the fan grills on both side panels of the unit.



Remove the sensor cover.

Gently clean the dust in the sensor hole using a cotton swab.

The filters should be cleaned every month or more frequently, depending on environmental conditions.



Use a vacuum cleaner with a soft brush or water to clean the side panels and pre-filters.

Ensure the side panels and pre-filters are completely dry before attaching them back to the unit.

Important notes:

- Do not put the unit into water or use water to wash it directly.
- Do not use alcohol, oil, benzene, or any corrosive or flammable detergent to clean the unit.
- Use a soft cloth with mild detergent to clean the unit, and make sure the unit is completely dry after cleaning.
- Regularly clean the inside and outer surface to prevent dust from gathering.

Storage Instructions

If the unit will not be in use for a long time, please pack and store the unit properly.

- Unplug the unit's power supply.
- Clean the pre-filter.
- Use a soft cloth to clean the air intake and air outlet.
- Pack and store the unit away from moisture and direct sunlight.

Filter Replacement

Filter Replacement Indicator



After 3600 hours of use, the Filter Replacement Indicator light will start blinking during operation.

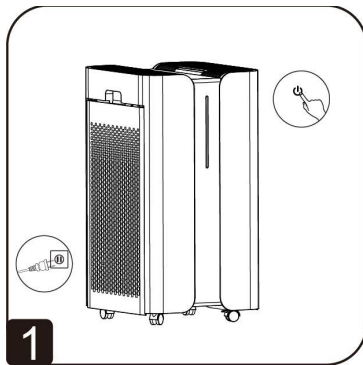
Replace the filters according to the following Filter Replacement Instructions.

Then, follow the instructions under [Filter Reset](#) to reset the filter usage countdown timer.

Filter Replacement Instructions

The Ionmax+ Aire comes with the filters fitted inside. Please remove the plastic packaging from the filters before using the air purifier.

When replacing with new filters, remove all plastic packaging and place the filters into the unit, as described here.



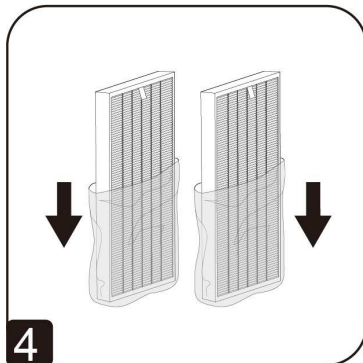
1 Turn off the power by pressing the power button.



2 Open both side panels' covers.



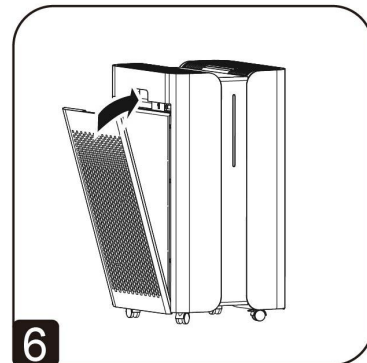
3 Remove the filters from the unit.



4 Dispose of the filters' packaging.



5 Reinsert the filters into the unit.



6 Reinsert the side panels.

7 Reset the filter usage countdown timer following the [Filter Reset](#) instructions.

Note:

- Avoid touching used filters if you suffer from allergies or have breathing difficulties.
- Wear gloves and a face mask when replacing the filter. Additionally, wash your hands with soap and water once the replacement is complete.
- Place the used filter in a sealed bag and throw it away safely to prevent the spread of pollutants.
- Please note: The 3-in-1 filter cannot be washed with water or used repeatedly. Replace the filters when indicated by the Filter Replacement Indicator.

Troubleshooting Guide

Before carrying out any of the following service checks, unplug the unit from the power supply.

DO NOT attempt to repair or adjust this unit's electrical or mechanical functions. All servicing should be performed by qualified personnel only.

Problem	Probable Cause	Solution
Unit not operating	Power cable not plugged in	Plug power cable into a suitable power outlet
	Power cable not plugged in properly	Plug power cable in correctly
	Unit not powered on	Touch the Power button to switch on the unit
	Side panels not attached properly	Reattach the side panels correctly
	Filters not inserted correctly	Check that the filters are inserted correctly and secured firmly in place
Loud noise	Filters not unpacked	Unpack the filter packaging (see Filter Replacement Instructions)
	Too much dust on the pre-filters	Clean the pre-filters (see Cleaning and Maintenance)
	3-in-1 filters are dirty	Replace with new 3-in-1 filters
Abnormal noise	Foreign object is in contact with fan	Stop unit operation, remove the side panels and filters and remove any obstruction visible on the fan
	Unit is positioned on uneven surface	Position the unit on a flat, stable and even surface
	Loose parts inside the unit	Stop unit operation and contact customer service
	Motor broken	
Reduced airflow	Filters are dirty	Replace with new filters
	Filters not unpacked	Unpack the filter packaging (see Filter Replacement Instructions)
Odour from air outlet	Filters are dirty	Replace with new filters
Fan speed cannot be changed manually	Unit is not in Manual mode	Activate Manual mode to change the fan speed (see Fan Speed)



WARRANTY DETAILS

Congratulations on your purchase! It is our aim to provide you with quality products that you can trust. Our goods come with guarantees that cannot be excluded under the Australian Consumer Law. You are entitled to a replacement or refund for a major failure and compensation for any other reasonably foreseeable loss or damage.

You are also entitled to have the goods repaired or replaced if the goods fail to be of acceptable quality and the failure does not amount to a major failure.

The Guarantee

The product is guaranteed to be free from defects in workmanship and parts for a period of 24 months from the date of purchase. Defects that occur within this warranty period, under normal use and care, will be repaired, replaced or refunded at our discretion, solely at our option with no charge for parts and labour. The benefits conferred by this warranty are in addition to all rights and remedies in respect of the product that the consumer has under the Trade Practices Act and similar state laws.

Proof of Purchase

This warranty is valid for the original purchase and is not transferable. Please keep your purchase docket or receipt as proof of purchase and as proof of date on which the purchase was made. The purchase docket (or a copy) or receipt must be presented with the warranty when making a claim under this warranty.

Service during the Warranty Period

To claim for warranty, contact us on 1300 800 200 or support@andatech.com.au to get an RA# (Return Authorisation Number) or submit a support ticket on my.andatech.com.au. Ensure that the RA# is clearly stated on the outside of the packaging and that the product is properly packaged so that no damage occurs to the product during transit. Shipping of the product back to us for warranty will be at your cost. A product return without the RA# will not be accepted.

Extent of Warranty

This warranty is limited to defects in workmanship or parts. All defective products or parts will be repaired or replaced. This warranty does not cover manuals and packaging.

Normal Wear and Tear

This warranty does not cover normal wear and tear to the product or parts.

Exclusions

This warranty does not cover:

- Any defect caused by an accident, misuse, abuse, improper operation, lack of reasonable care, unauthorised modification, loss of parts, tampering or attempted repair by a person not authorised by the distributor.
- Any product that has been damaged by a lightning strike either directly or indirectly or a main power surge or liquid ingress.
- The product if it is located outside of Australia.
- Any damage caused by improper power input or improper cable connection.

Andatech Pty. Ltd.

PO Box 3038, Nunawading VIC 3131, Australia.

Phone: 1300 800 200 Fax: 1300 883 802 Email: support@andatech.com.au



WARRANTY REGISTRATION

Register your Ionmax+ Aire online at my.andatech.com.au or fill out this form and forward to the address below with a copy of your proof of purchase. Contact us on **1300 800 200** or visit ionmax.com.au for options to extend your warranty.

Andatech Pty Ltd

PO Box 3038, Nunawading VIC 3131, Australia.

Product	:	Ionmax+	<input type="checkbox"/> Aire	<input type="checkbox"/> Aire X
Date of Purchase	:	_____		
Place of Purchase	:	_____		
Serial No.	:	_____		
Surname	:	_____		
Given Name	:	_____		
Address	:	_____		
Suburb	:	_____		
Postcode	:	_____		
State	:	_____		
Contact No.	:	_____		
Email	:	_____		



ionmax⁺

ionmax.com.au
1300 800 200